

A concealed **Sliding Door System** that optimises usage of space... Since 1995



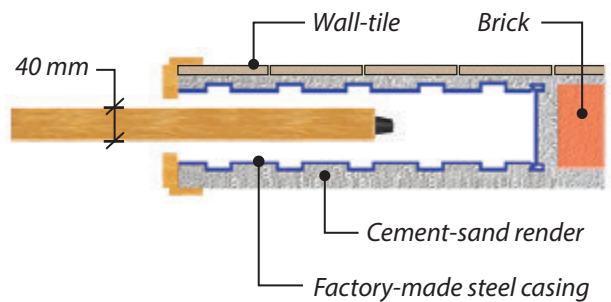
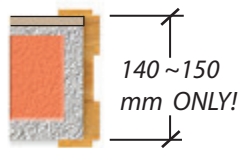
"Optimising Space Usage"



Aluminium Track

Roller

Factory-made steel casing reinforced with wiremesh



- ✓ **SLIDEHIDE** increases the attractiveness of new housing development project to potential buyers and investors through offering a superior, thoughtful and spacious floor layout.
- ✓ **SLIDEHIDE** transform wasted floor areas into usable space to allow homeowners more space for storage or to enhance their living environment.
- ✓ **SLIDEHIDE** equipped Architects and Interior Designers with more flexible design options when they are faced with the challenge of delivering the best floor layout versus decreasing built-in floor area.



COMPANY BACKGROUND

SLIDE & HIDE System (S) Pte Ltd was incorporated in Singapore in 1995 to manufacture and supply products that optimises usage of interior space. Over the years, our brand "**SLIDEHIDE**" had become well accepted by the real estate industry as a top-quality concealed sliding door system.

To stay relevant now and in future, we fervently seek to work closely with developers, architects, designers and constructors to better understand their aspiration and needs. This interaction and networking also provide the opportunity to spot new trends and learn new concepts.

Our Strength

We have more than 20 years of experience, from R&D to manufacturing of concealed sliding door systems and related space-saving products.

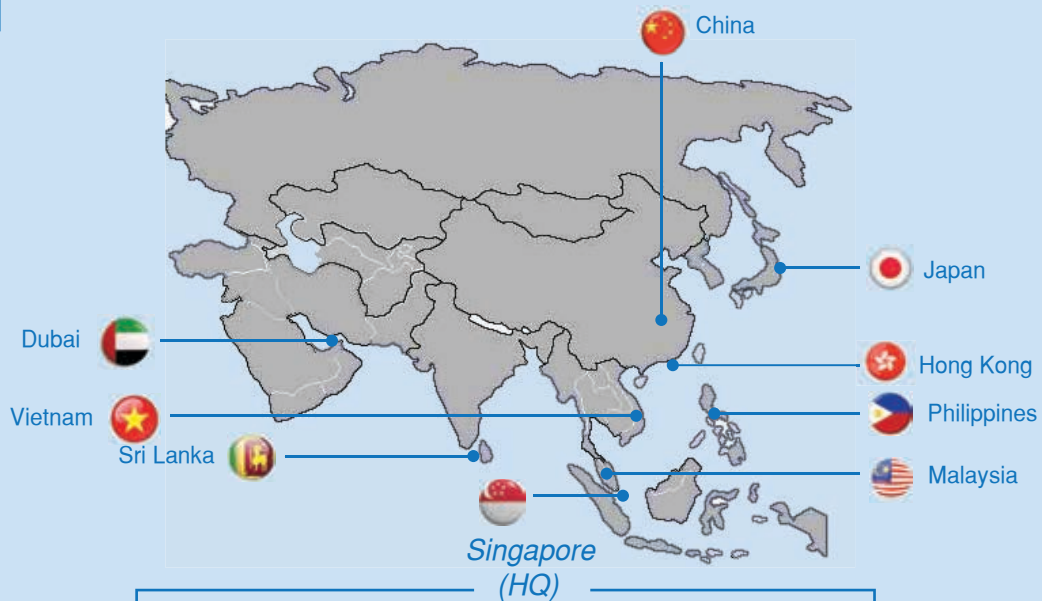
Our Mission

Our goal is to deliver top quality space-optimization products so that people will have more indoor space to live, work and enjoy their activities.

Our Vision

We want to be Asia's leading Corporation in delivering creative, top quality, competitive and reliable products. To retain our position, we strive to constantly innovate, stay productive and maintain high quality standard.

Our Presence



PRODUCTION AREA



SINGAPORE WORKFORCE

PROJECT REFERENCES

Some of the prestigious projects that SLIDEHIDE was installed :-

SINGAPORE



Ardmore Park Condo



St Regis Residences



W Hotel Sentosa



South Beach Residences



Reflections at Keppel Bay



D' Leedon Condominium



Lush Acres Executive Condo



Sky Terrace @ Dawson (HDB BTO)



Changi General Hospital

MALAYSIA



Seri Pilmoor Bungalows



Damansara City



Setia Sky Residences



Somerset Puteri Harbour



Le Nouvel Condo



Pavilion Hilltop



Ritz Carlton Residences



Park Seven



Sunway Geo Residences



Symphony Hills Semi-Ds

CHINA



Four Seasons Hotel (Hong Kong)



Marriott Hotel (Shanghai)



Sheraton Hotel (Beijing)



Crowne Plaza Service Apartments (Suzhou)



Westin Hotel (Beijing)



Youyou International Plaza (Shanghai)



Dongjing International Hotel (Shanghai)



Xuhui Yuyuan (Shanghai)

OTHER Countries



*The Dubai Mall
(Dubai, United Arab Emirates)*



*Emperor Hotel
(Colombo, Sri Lanka)*



*Panorama Apartments
(Ho Chi Minh City, Vietnam)*



*Anandamaya Residences
(Jakarta, Indonesia)*



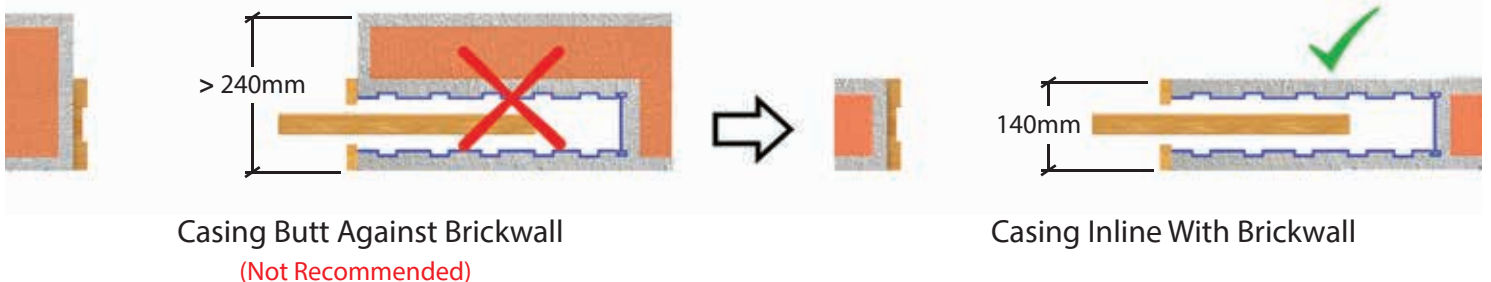
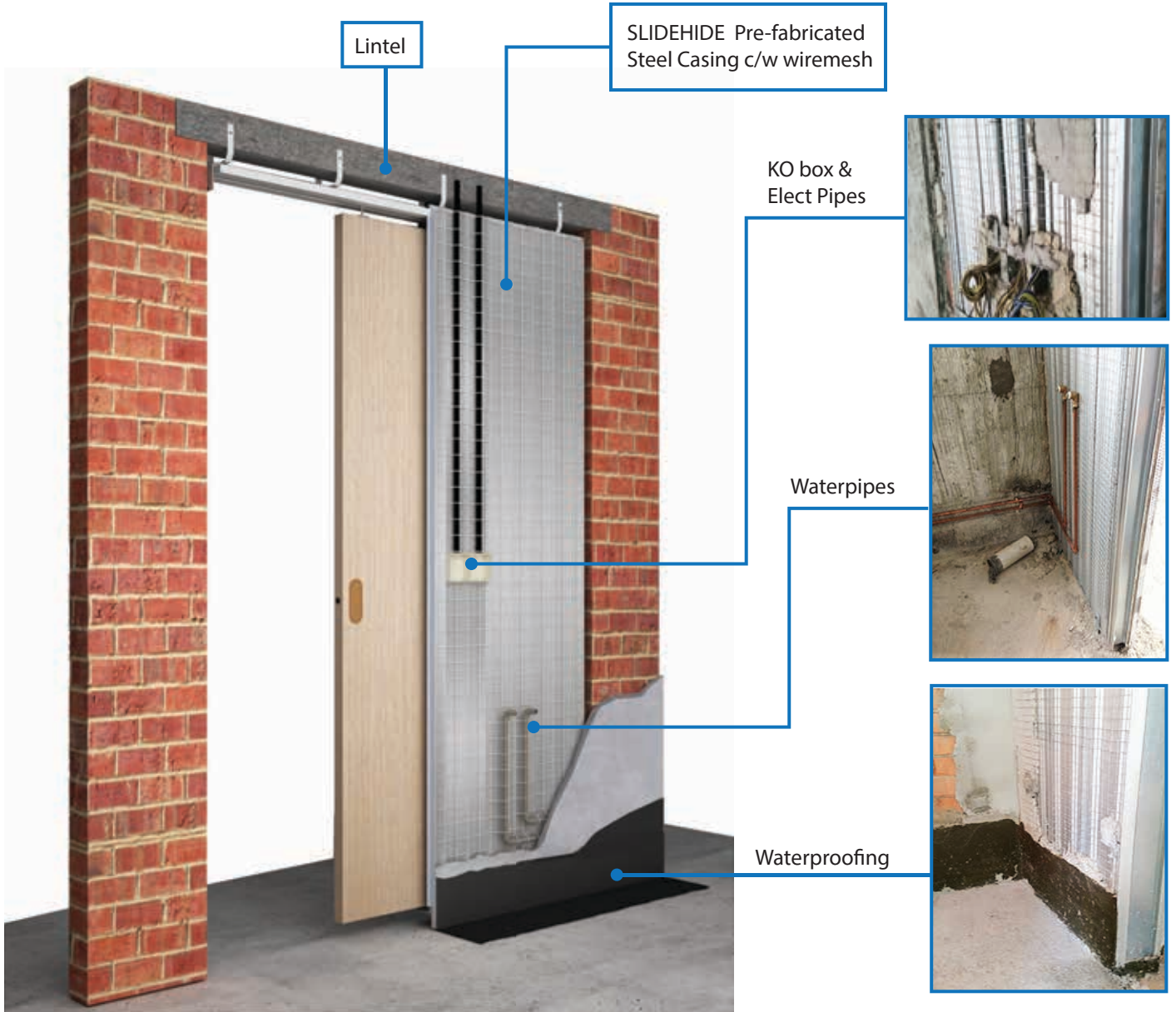
*Daiwahouse-Retirement Home
(Tokyo, Japan)*

WHAT IS "SLIDEHIDE"

SLIDEHIDE is a factory prefabricated 3-D steel casing with a layer of steel wire-mesh stapled onto its surface that integrates with a self-supporting tracking system. The idea is to hang and hide a sliding door inside the wall, thereby giving you the effect that there isn't any door.

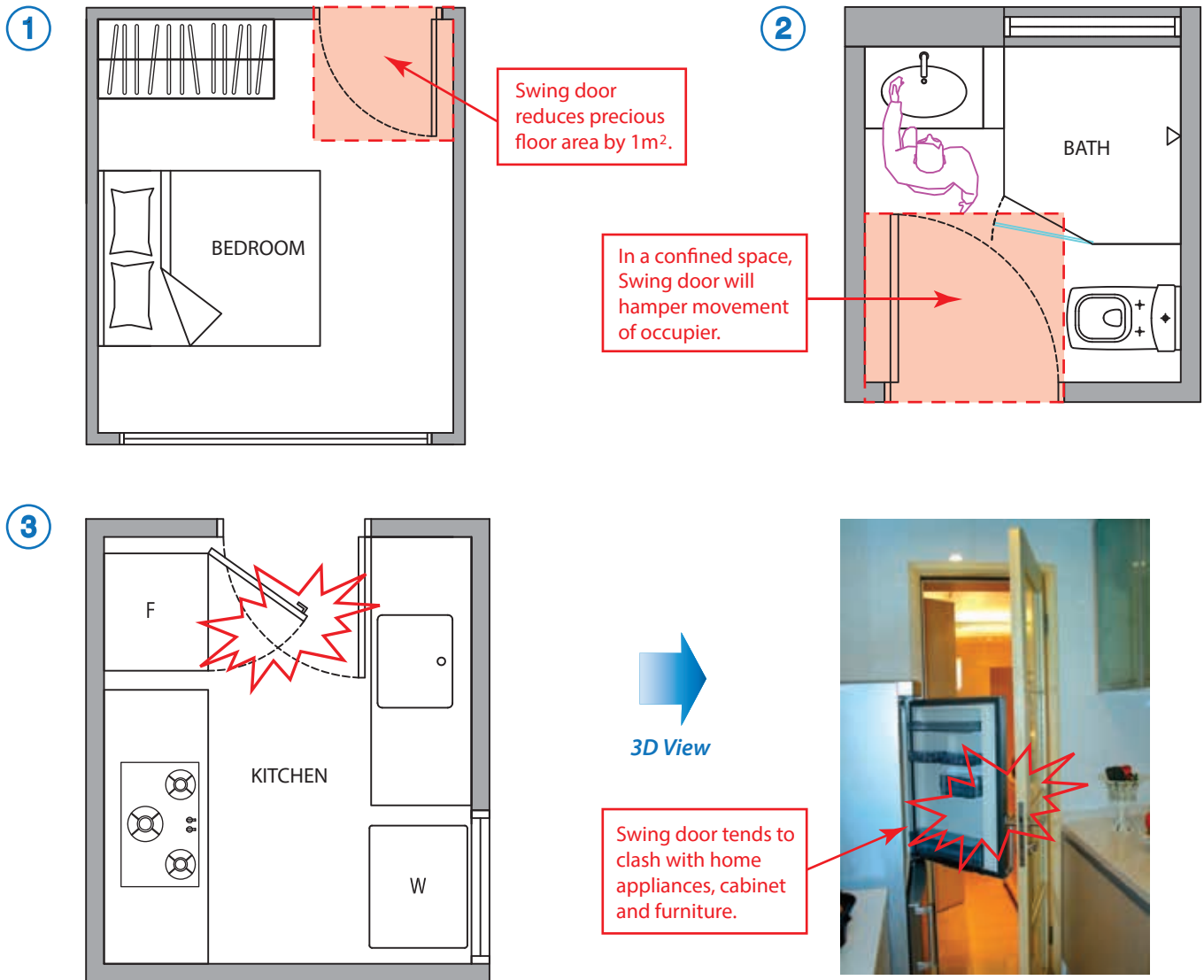
The 3-D casing is to replace the brickwall. Plastering, waterproofing material and wall-tiles (if any) covering the adjacent brickwall will also cover the casing. The final total thickness of the adjacent brickwall and the casing, including finishes, is the same.

Electrical switches/cables and water pipes can be fixed directly onto the casing surface and these fixtures can be embedded inside the finishes.

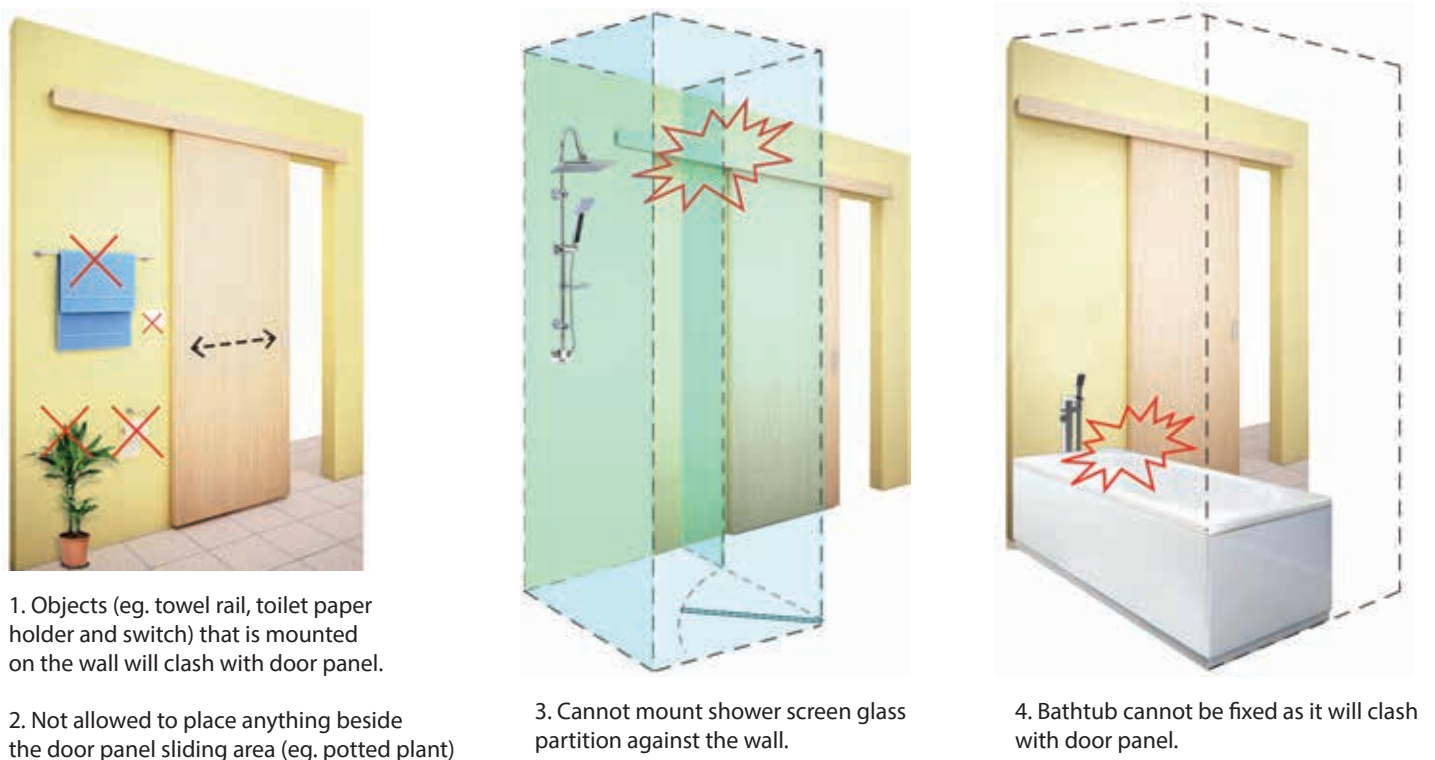


FLAWS OF TRADITIONAL DOORS

FLAWS OF SWING DOOR

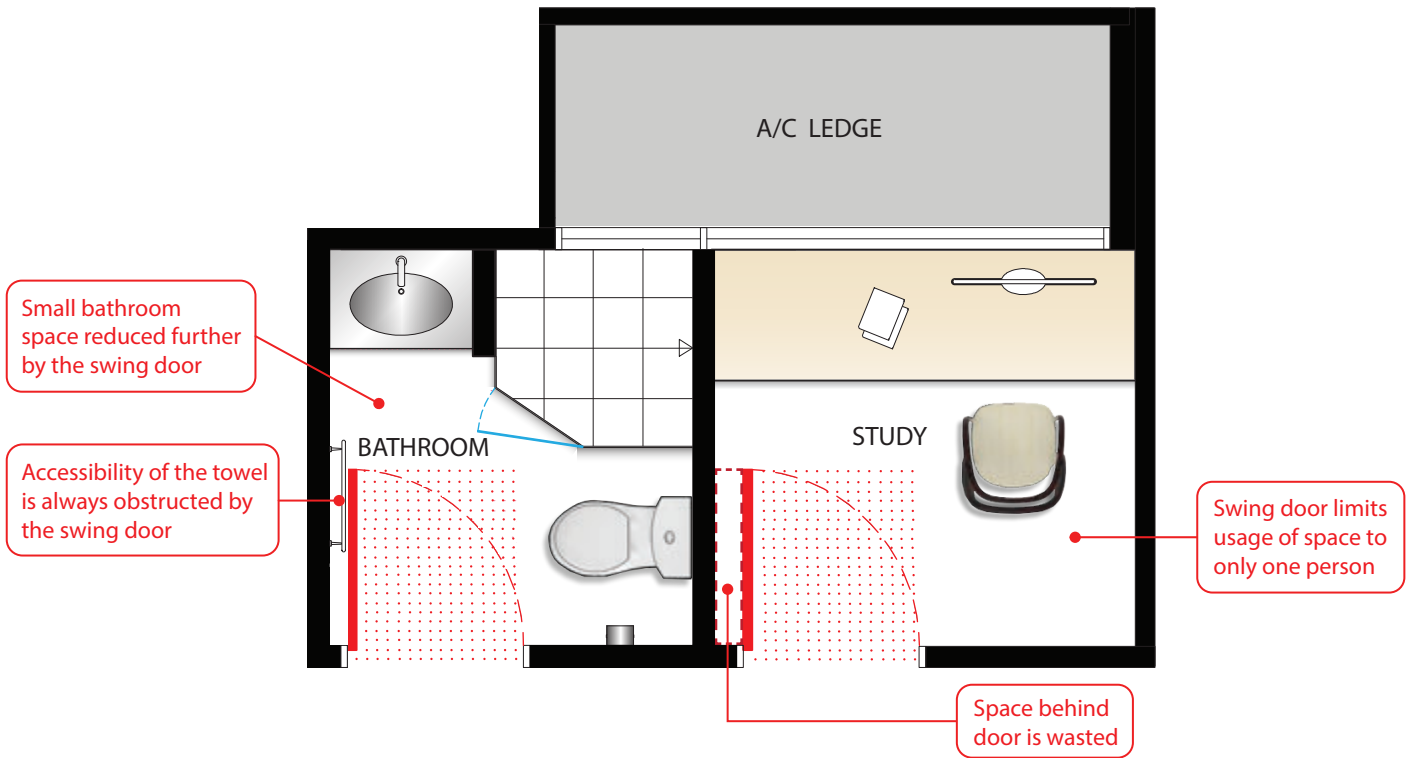


FLAWS OF EXPOSED SLIDING DOOR

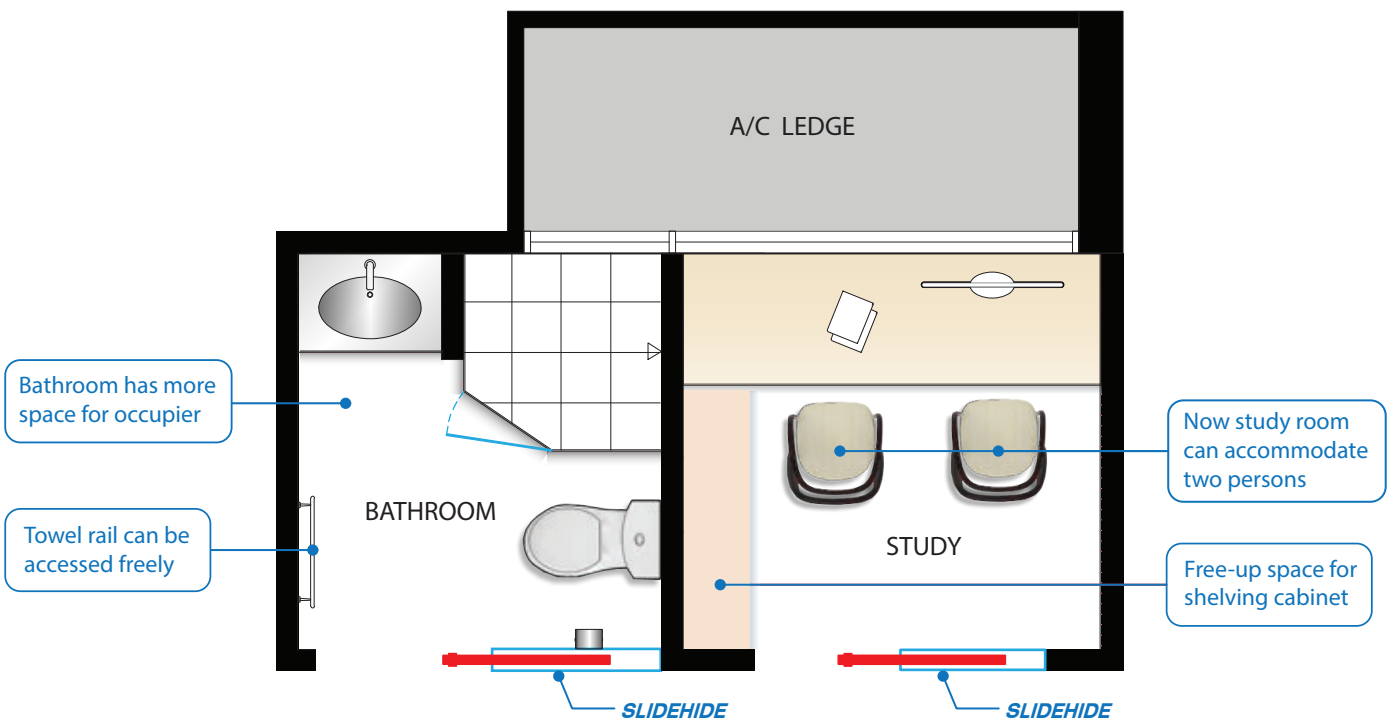


BENEFITS OF SLIDEHIDE

A FUNCTIONAL VERSUS A THOUGHTFUL DESIGN



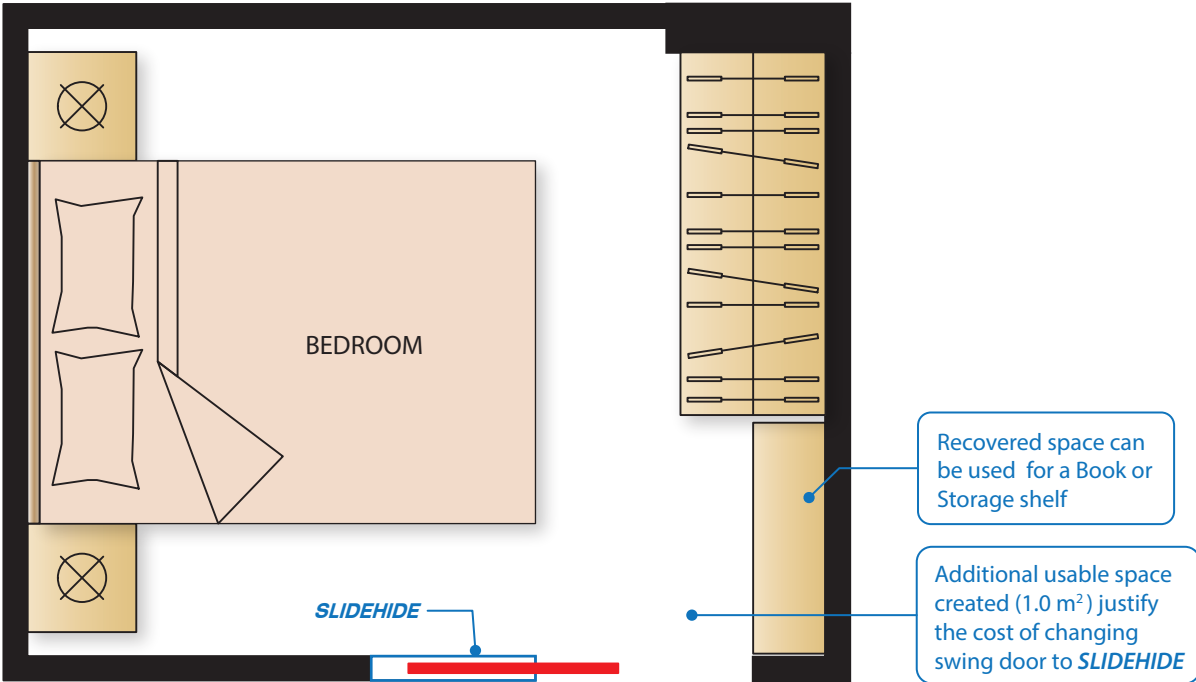
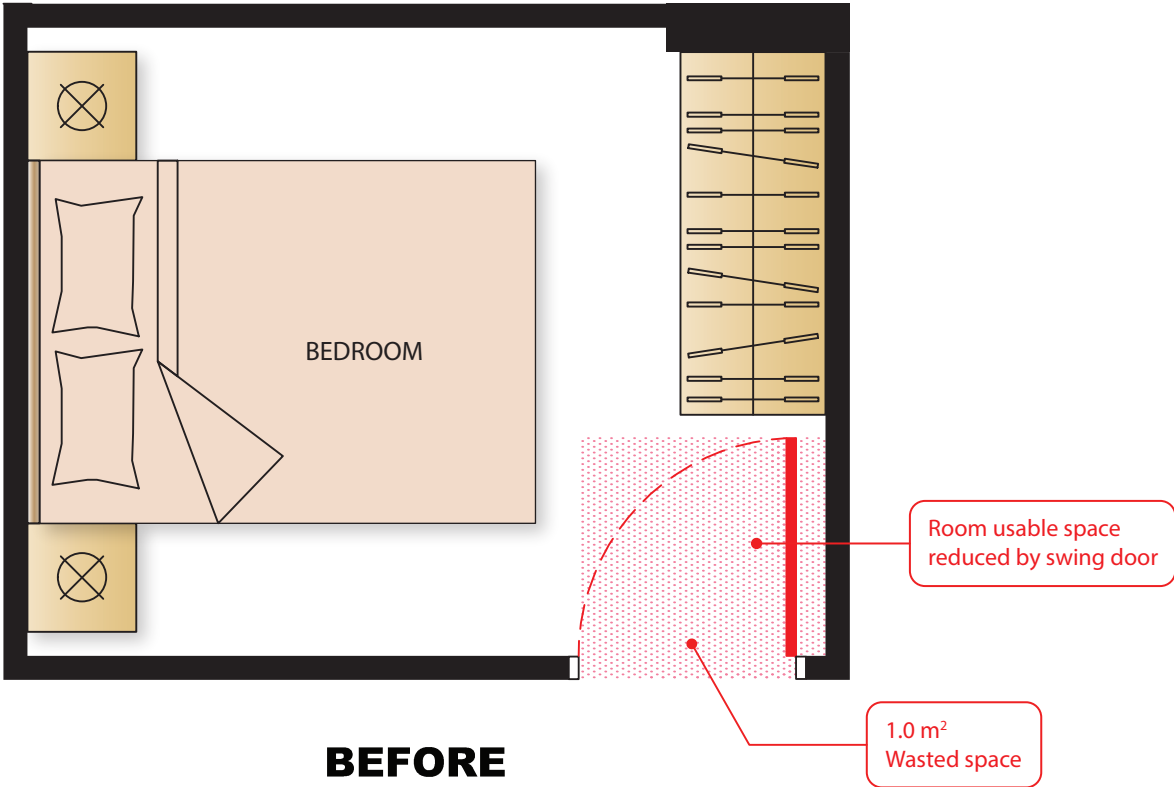
BEFORE



AFTER

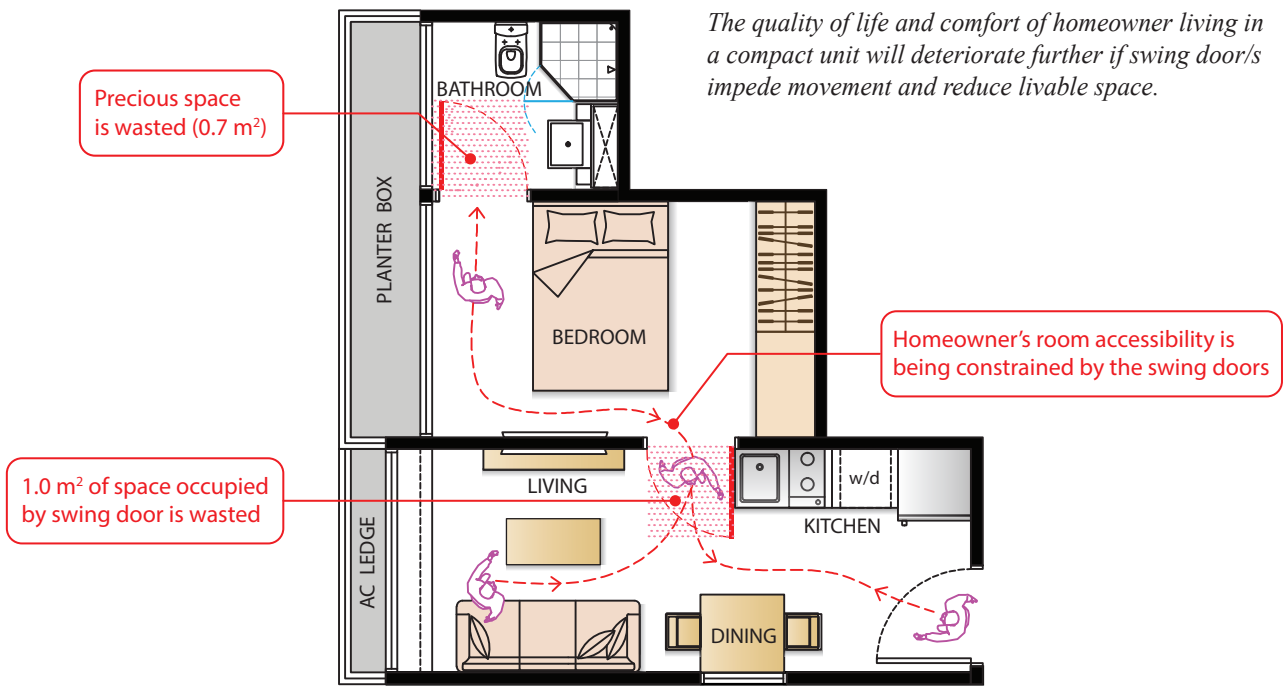
BENEFITS OF SLIDEHIDE

TRANSFORMING WASTED SPACE TO USABLE SPACE

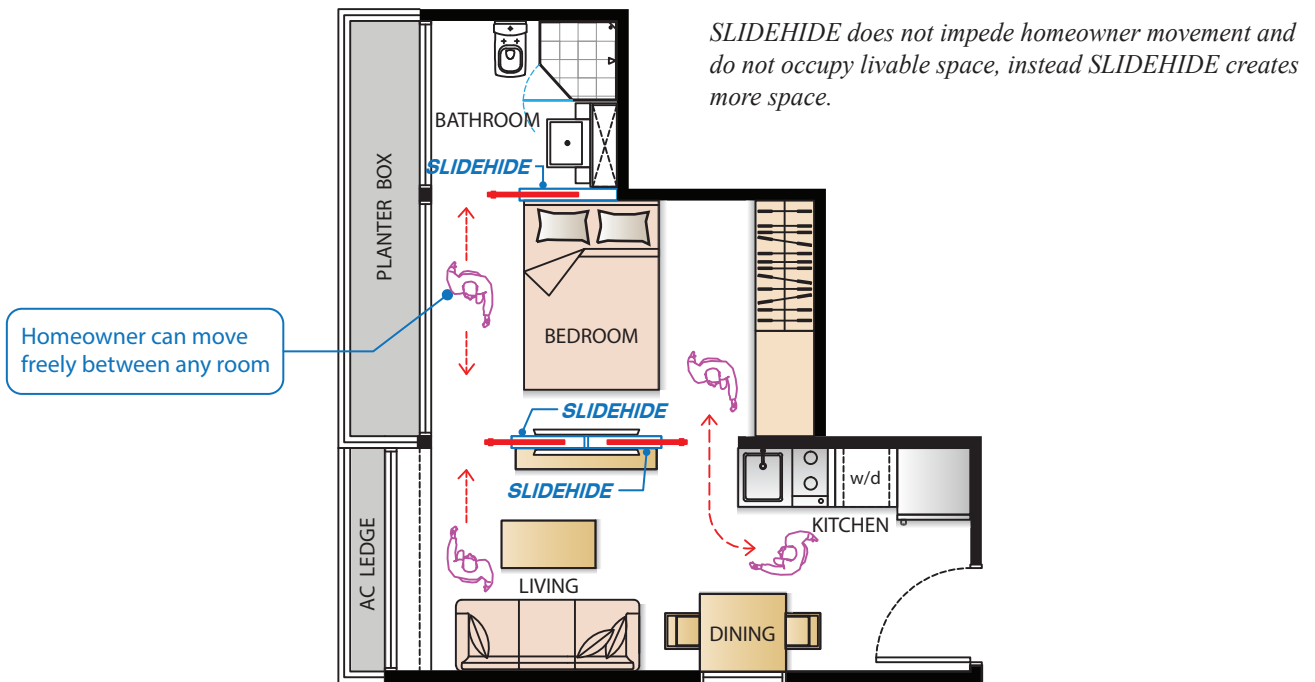


BENEFITS OF SLIDEHIDE

CREATING MORE SPACE FOR A 36m², 1-BEDROOM CONDOMINIUM



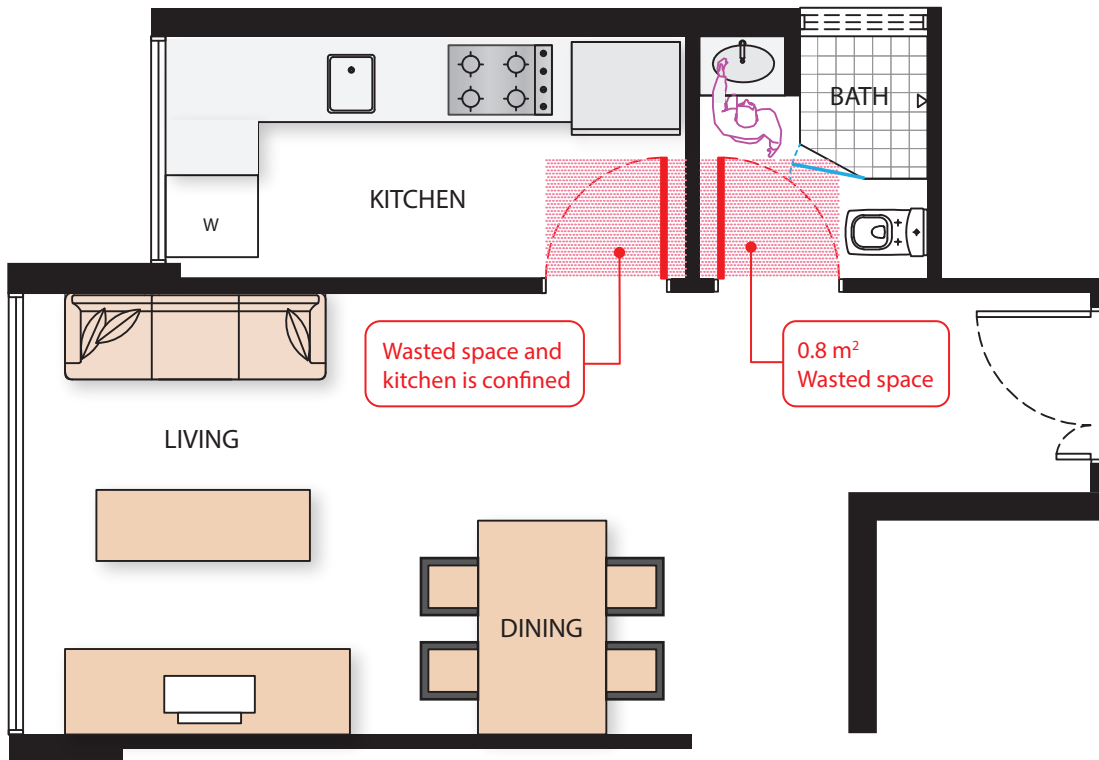
BEFORE



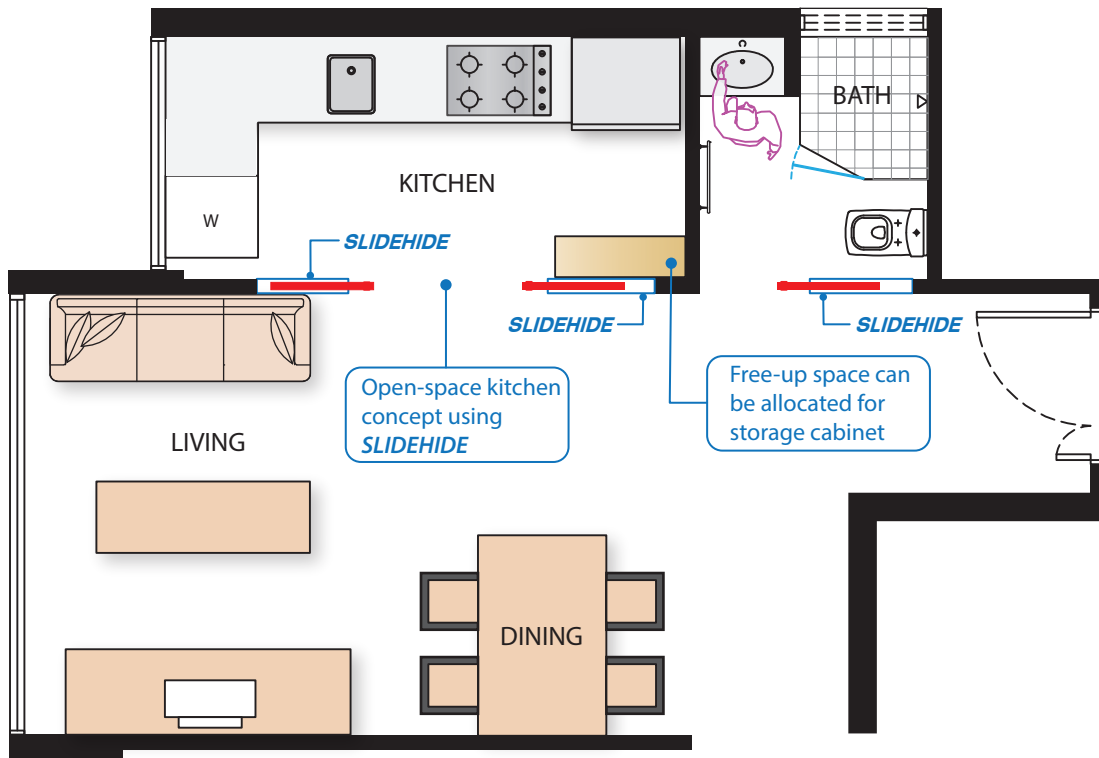
AFTER

BENEFITS OF SLIDEHIDE

CONVERTING DEMARCATED AND CONFINED SPACES INTO A CONNECTED AND BIGGER OPEN SPACE



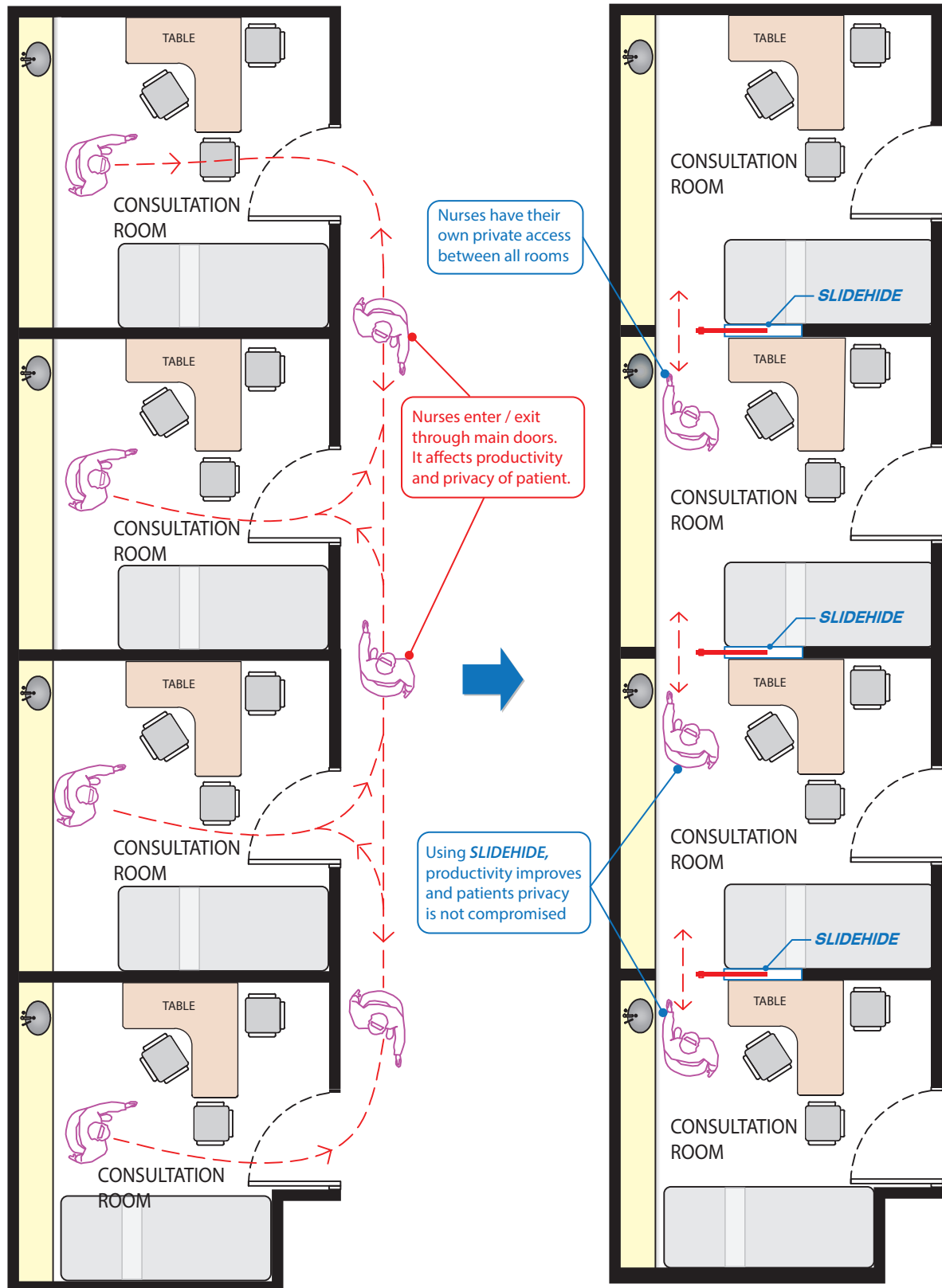
BEFORE



AFTER

BENEFITS OF SLIDEHIDE

IMPROVING PRODUCTIVITY AND PROTECTING PATIENT'S PRIVACY IN A HOSPITAL



BEFORE

AFTER

SLIDEHIDE SCOPE OF WORKS

1. Standby proposed structural wall opening, overhead lintel and plinth (optional).



2. Unpack and standby SLIDEHIDE casing for installation.



3. Anchor the SLIDEHIDE casing within the structural opening. The gaps between the track/casing and brick-wall will be grouted with cement-sand.



4. Cement-sand render is trowelled onto the brickwall and steel casing surface. Lay fine-mesh along the grouted cement-sand to minimize plaster cracks.



5. After floor and wall finishes is completed, standby to fix door frame and door panel.



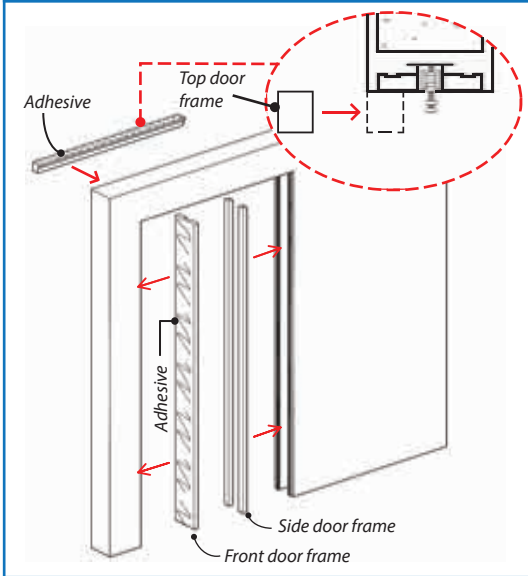
6. Installation sequence is completed.



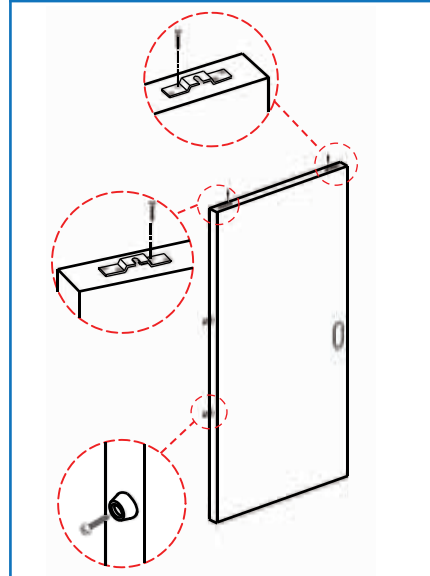
 How many casings can be installed in one day? - 1 skilled worker can install 5 to 6 casings per day.

DOOR PANEL+ FRAME, ACCESSORIES INSTALLATION GUIDE





Fix Door Frame using adhesive or fastener

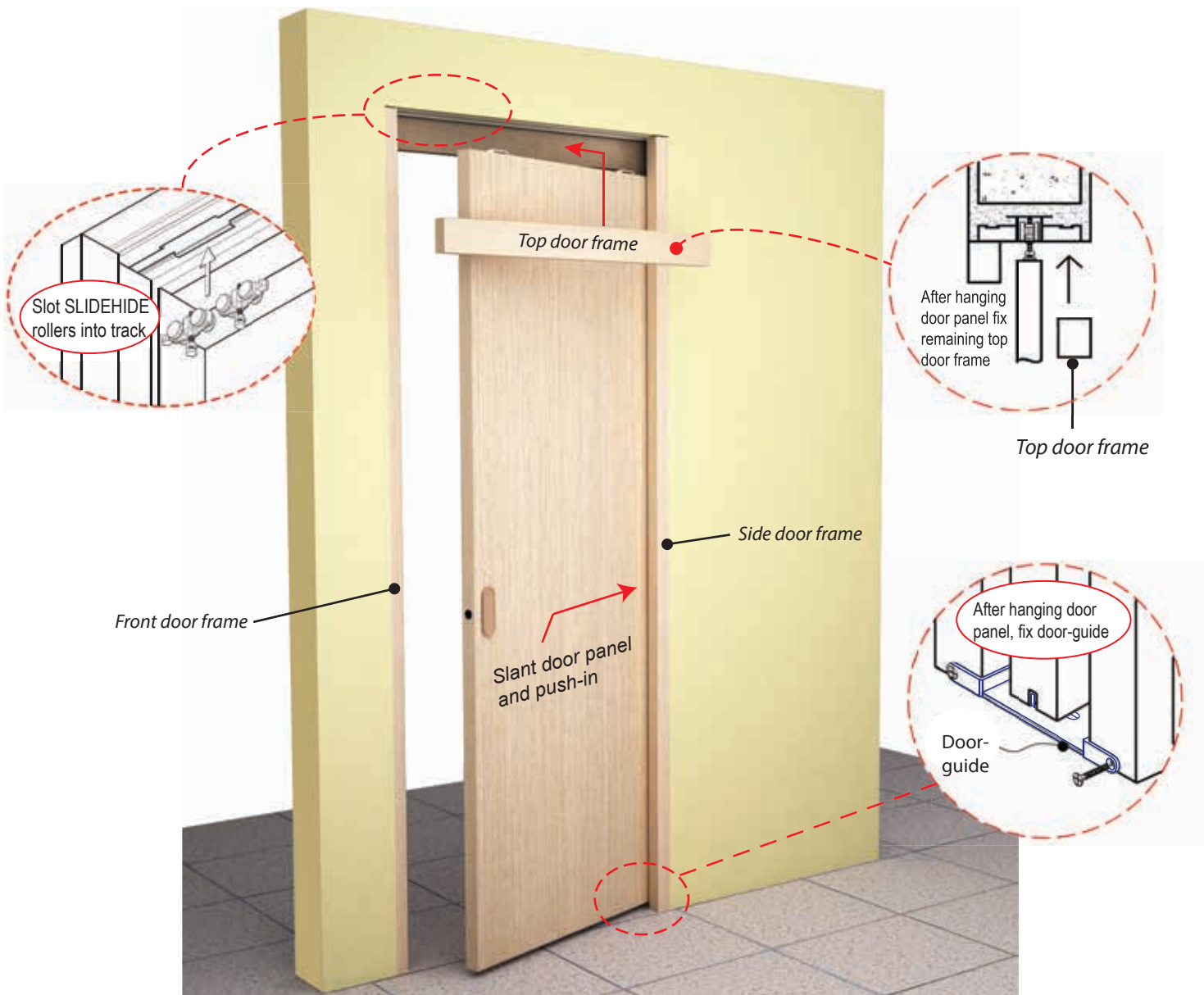


Fix Accessories to Door Panel



Standard Sliding Door Accessories supplied by SLIDE & HIDE

	
Roller & Hanging bracket	Glass clamp
	
Door-guide	Anti-impact stopper



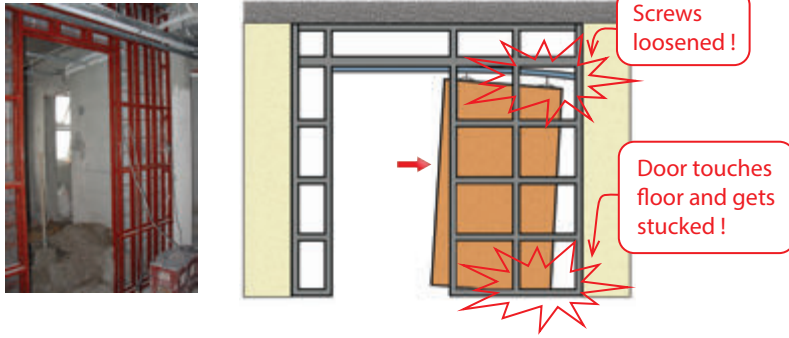
“What if in future the homeowner wants to replace the door panel?”

- Procedure :
1. Remove the door-guide.
 2. Remove top door frame.
 3. Unlock the roller from the hanging bracket.
 4. Pull-out the door panel.

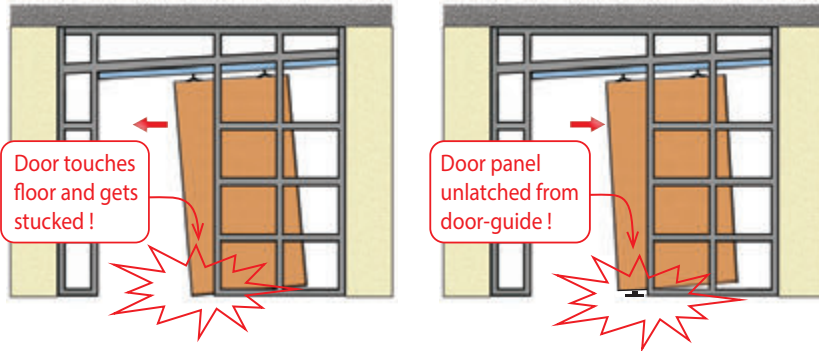
NO HACKING OF WALL IS REQUIRED !

PROBLEMS OF BUILT-ON-SITE SYSTEM

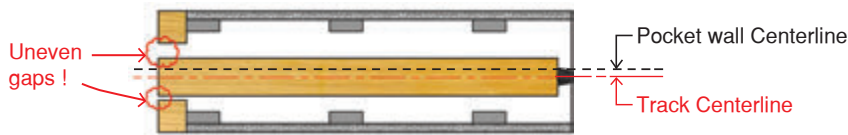
1. TRACK SAGS



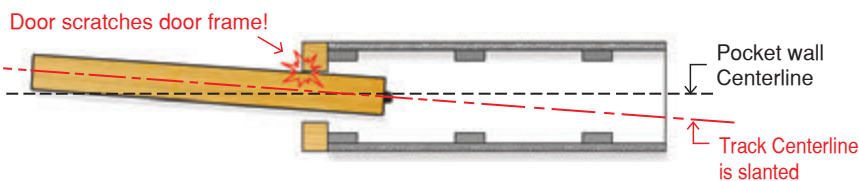
2. TRACK IS NOT HORIZONTAL



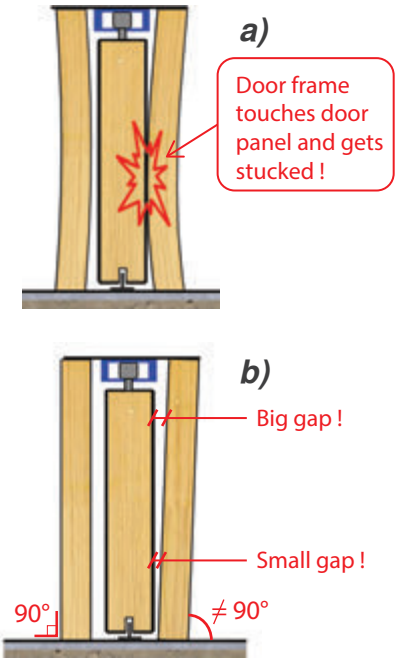
3. TRACK IS NOT IN THE CENTER OF POCKET WALL



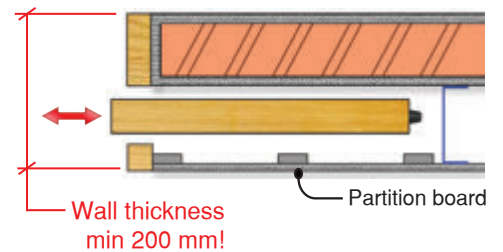
4. TRACK IS NOT PARALLEL TO THE CENTERLINE OF POCKET WALL



5. SUB-STANDARD WORKMANSHIP



6. VERY THICK AND UGLY POCKET WALL



OTHER RELATED ISSUES

- ★ *If welding of steel hollow section is the preferred method to construct a pocket-wall frame, there will be a risk of explosion.*
- ★ *The time required to construct a Built-On-Site pocket wall frame system of acceptable quality is unproductive...approx 1~2 sets per day.*
- ★ *Stoppage of work if some vendors fail to deliver materials on time to jobsite.*
- ★ *Built-On-Site System do not have quality assurance.*
- ★ *Unreliable Rollers quality.*

SLIDEHIDE
"Optimising Space Usage"



SLIDEHIDE QUALITY ASSURANCE

SLIDEHIDE Rollers Endurance test result.

No audible sound heard and no shaky sliding motion felt after 100,000 cycles.
One cycle is equal to back and forth motion.

SLIDEHIDE MODELS

SLIDEHIDE OFFERS 8 DIFFERENT DESIGNS TO SATISFY DESIGNERS CREATIVE MIND



1 DOOR IN 1 POCKET



2 DOORS IN 2 POCKETS



2 DOORS IN 1 POCKET



4 DOORS IN 2 POCKETS

SLIDEHIDE MODELS



1 FRAMELESS GLASS DOOR IN 1 POCKET



2 FRAMELESS GLASS DOORS IN 2 POCKETS

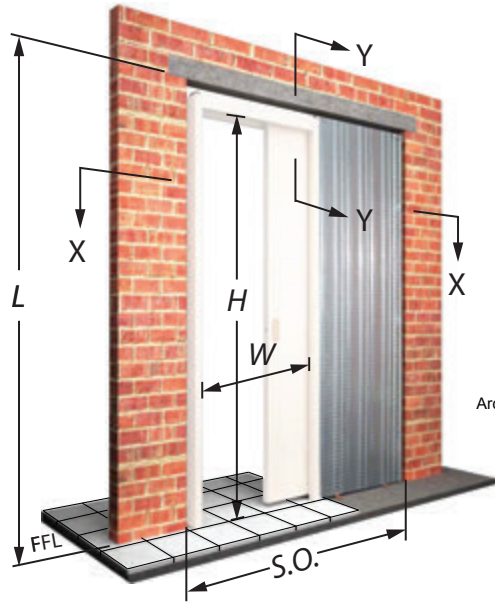


2 FRAMELESS GLASS DOORS IN 1 POCKET



4 FRAMELESS GLASS DOORS IN 2 POCKETS

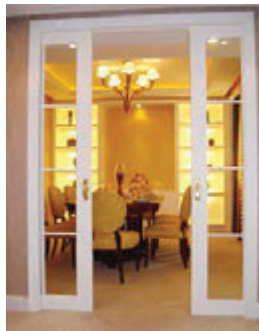
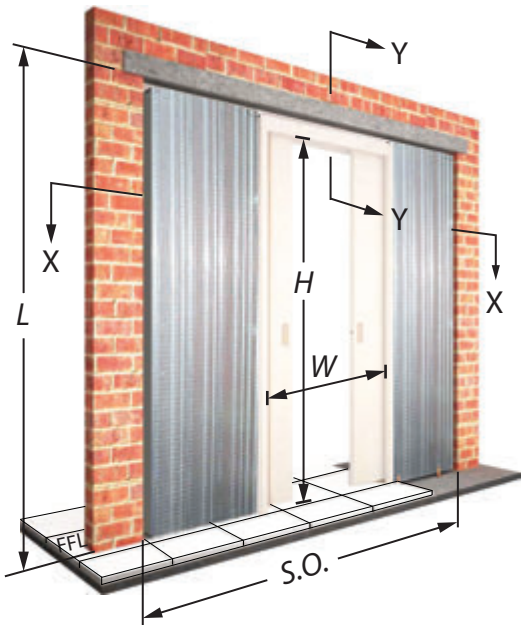
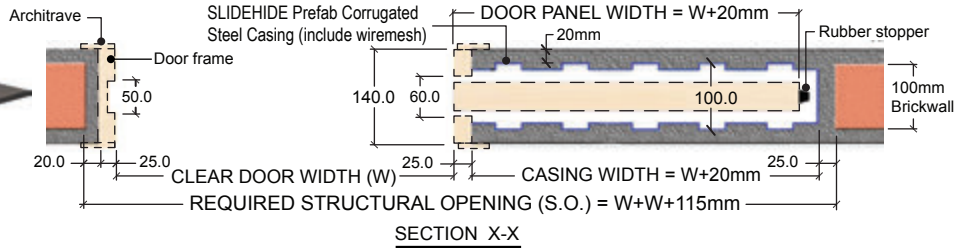
SLIDEHIDE SPECIFICATION



1 DOOR IN 1 POCKET

CLEAR DOOR WIDTH, W (mm)	CLEAR DOOR HT, H (mm)	STRUCT OPENING S.O. (mm)	LINTEL HT, L (mm)	DOOR PANEL DIMENSION	
				WIDTH (mm)	HEIGHT (mm)
700	H = 1900 to 2400mm in increment of 50mm	1515	L = Clear Door Ht (H) + 110mm measured from FINISHED FLOOR.	Door panel width = W + 20	Door panel ht = Track Soffit Ht (T) - 25 - 10 (Floor gap)
800		1715			
900		1915			
1000		2115			
1100		2315			
1200		2515			

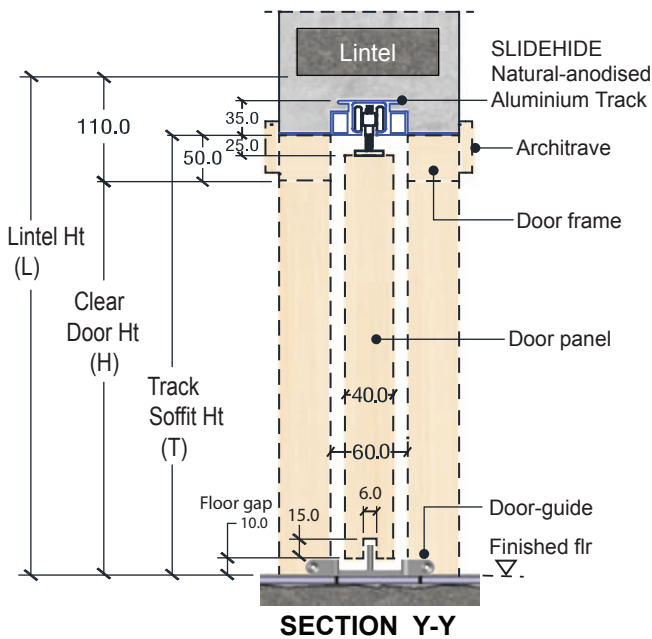
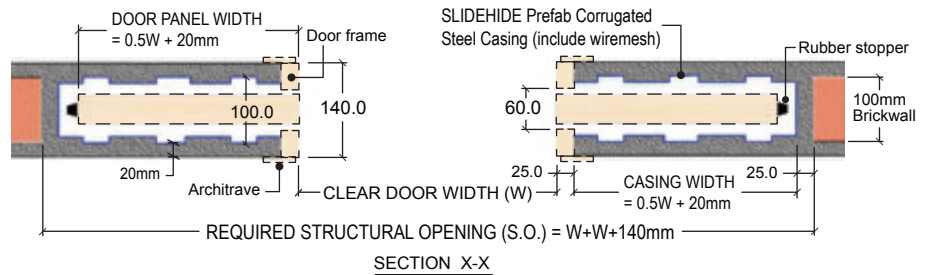
NOTE : SIZES AVAILABLE ARE FIXED AND CANNOT BE MODIFIED



2 DOORS IN 2 POCKETS

CLEAR DOOR WIDTH, W (mm)	CLEAR DOOR HT, H (mm)	STRUCT OPENING S.O. (mm)	LINTEL HT, L (mm)	DOOR PANEL DIMENSION	
				WIDTH (mm)	HEIGHT (mm)
1200	H = 1900 to 2400mm in increment of 50mm	2540	L = Clear Door Ht (H) + 110mm measured from FINISHED FLOOR.	Door panel width = 0.5W + 20	Door panel ht = Track Soffit Ht (T) - 25 - 10 (Floor gap)
1400		2940			
1600		3340			
1800		3740			
2000		4140			
2200		4540			
2400		4940			

NOTE : SIZES AVAILABLE ARE FIXED AND CANNOT BE MODIFIED



MATERIAL DESCRIPTION AND SPECIFICATION

Supply & install proprietary "SLIDEHIDE" cavity wall system for clear door opening W x H comprising a factory prefabricated CORRUGATED steel casing c/w wiremesh STAPLED on its surface, INTERNAL self-supported min 35mm deep Aluminium Track/s, 120kg capacity Rollers. Include/exclude Soft-brake device. Rollers must passed the 100,000 cycles Endurance Test by a government accredited testing center.

Product is available from SLIDE & HIDE System (S) Pte Ltd.
Tel: +65-6369 9988 Website: www.slidehide.com.sg

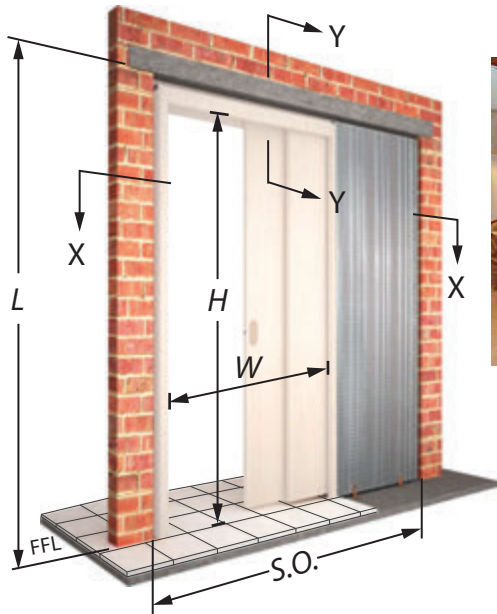
STANDARD ACCESSORIES				Soft-brake device (Optional)
Roller & hanging bracket	Door-guide	End-stopper	Anti-impact stopper	

LEGEND:-

- S.O. - Structural opening width.
- W - Clear door width.
- T - Height from Finish Floor Level (FFL) to Track soffit.
- L - Height from Finish Floor Level (FFL) to Lintel soffit.
- H - Height from Finish Floor Level (FFL) to top door frame soffit.

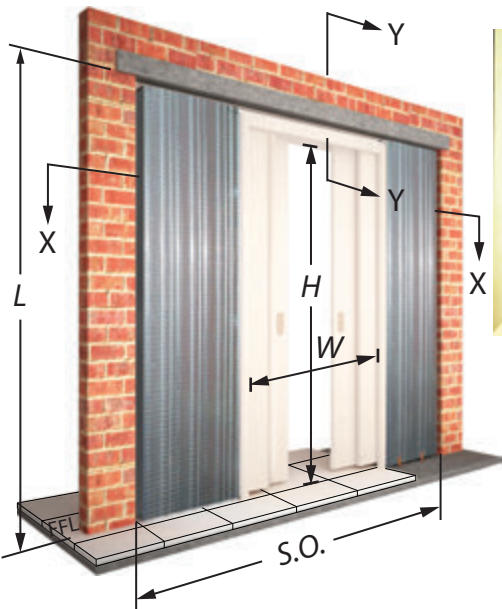
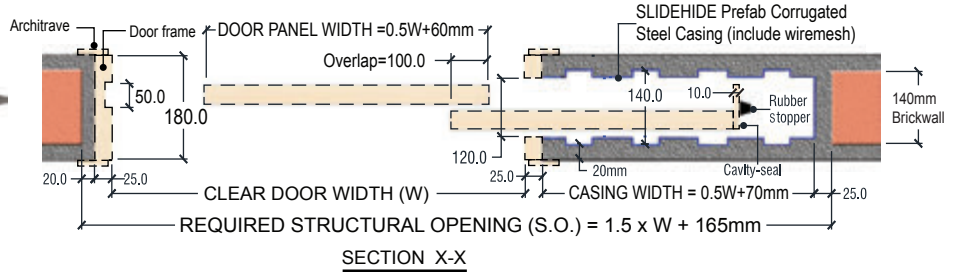
Advantages of Soft-brake device
 * No more door panel banging.
 * Quiet and Smooth closing motion.

SLIDEHIDE SPECIFICATION



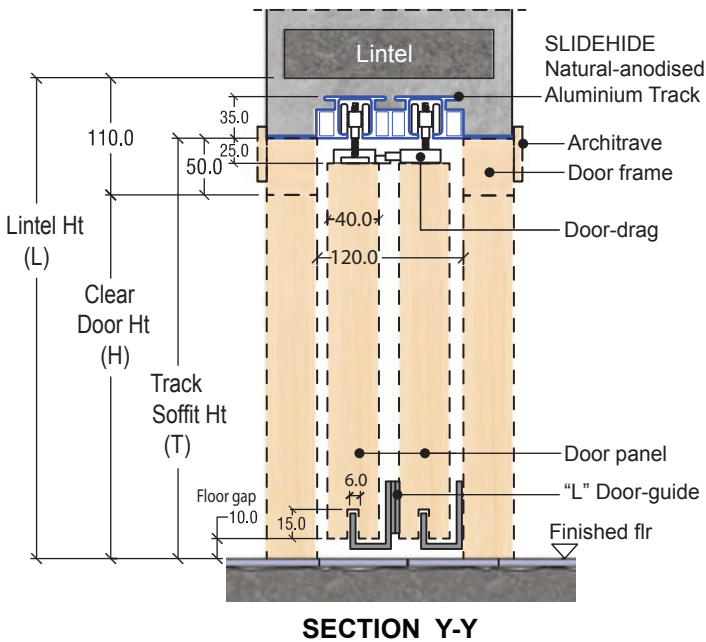
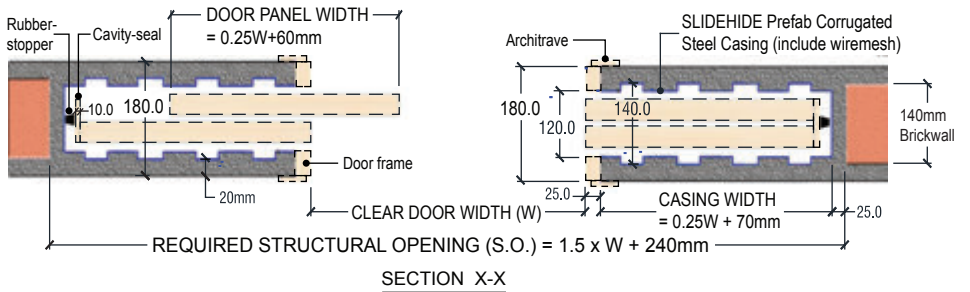
2 DOORS IN 1 POCKET					
CLEAR DOOR WIDTH, W (mm)	CLEAR DOOR HT, H (mm)	STRUCT OPENING S.O. (mm)	LINTEL HT, L (mm)	DOOR PANEL DIMENSION	
				WIDTH (mm)	HEIGHT (mm)
1400	H = 1900 to 2400mm in increment of 50mm	2265	L = Clear Door Ht (H) + 110mm measured from FINISHED FLOOR	Door panel width = 0.5W + 60	Door panel ht = Track Soffit Ht (T) - 25 - 10 (Floor gap)
1600		2565			
1800		2865			
2000		3165			
2200		3465			
2400		3765			

NOTE : SIZES AVAILABLE ARE FIXED AND CANNOT BE MODIFIED



4 DOORS IN 2 POCKETS					
CLEAR DOOR WIDTH, W (mm)	CLEAR DOOR HT, H (mm)	STRUCT OPENING S.O. (mm)	LINTEL HT, L (mm)	DOOR PANEL DIMENSION	
				WIDTH (mm)	HEIGHT (mm)
2400	H = 1900 to 2400mm in increment of 50mm	3840	L = Clear Door Ht (H) + 110mm measured from FINISHED FLOOR	Door panel width = 0.25W + 60	Door panel ht = Track Soffit Ht (T) - 25 - 10 (Floor gap)
2800		4440			
3200		5040			
3600		5640			
4000		6240			
4400		6840			

NOTE : SIZES AVAILABLE ARE FIXED AND CANNOT BE MODIFIED

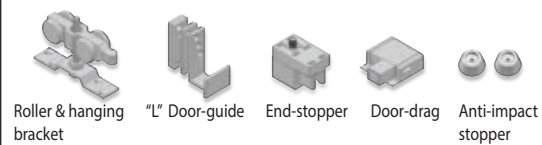


MATERIAL DESCRIPTION AND SPECIFICATION

Supply & install proprietary "SLIDEHIDE" cavity wall system for clear door opening W x H comprising a factory prefabricated CORRUGATED steel casing c/w wiremesh STAPLED on its surface, INTERNAL self-supported min 35mm deep Aluminium Track/s, 120kg capacity Rollers. Include/exclude Soft-brake device. Rollers must passed the 100,000 cycles Endurance Test by a government accredited testing center.

Product is available from SLIDE & HIDE System (S) Pte Ltd.
Tel: +65-6369 9988 Website: www.slidehide.com.sg

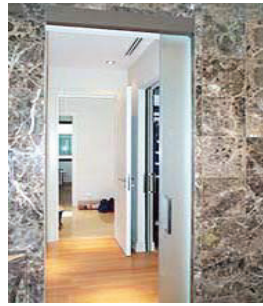
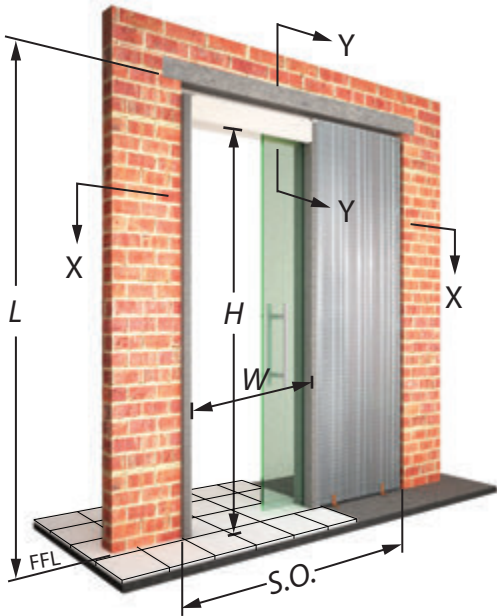
STANDARD ACCESSORIES



LEGEND:-

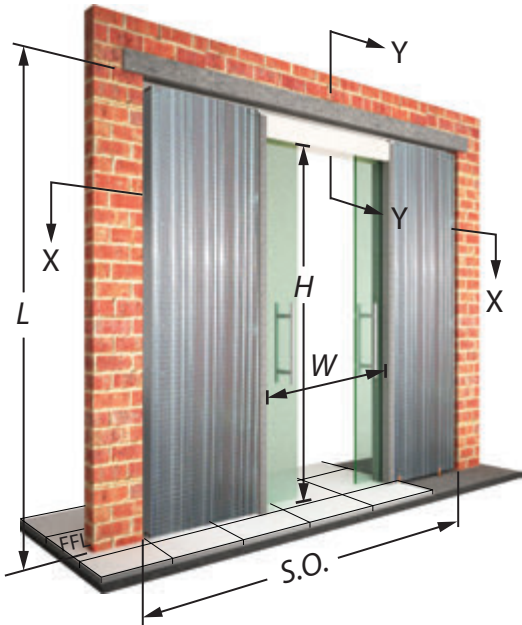
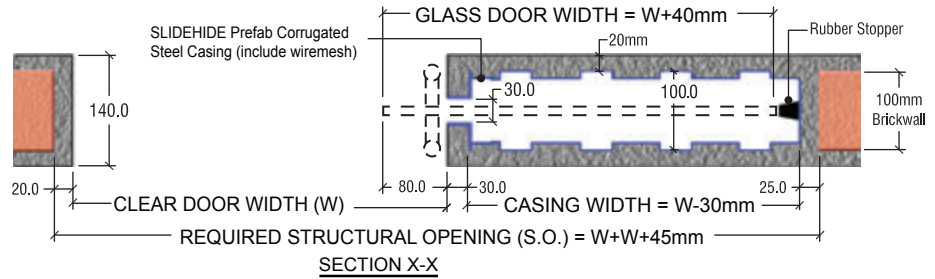
- S.O. - Structural opening width.
- W - Clear door width.
- T - Height from Finish Floor Level (FFL) to Track soffit.
- L - Height from Finish Floor Level (FFL) to Lintel soffit.
- H - Height from Finish Floor Level (FFL) to top door frame soffit.

SLIDEHIDE SPECIFICATION



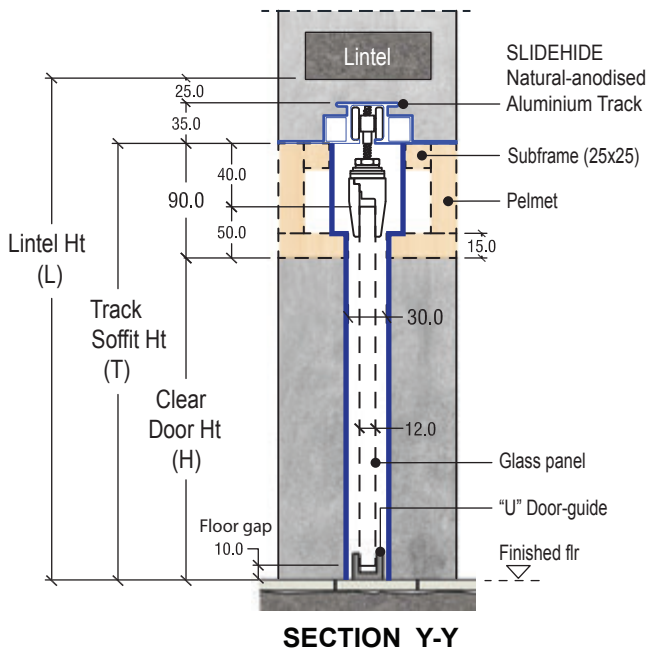
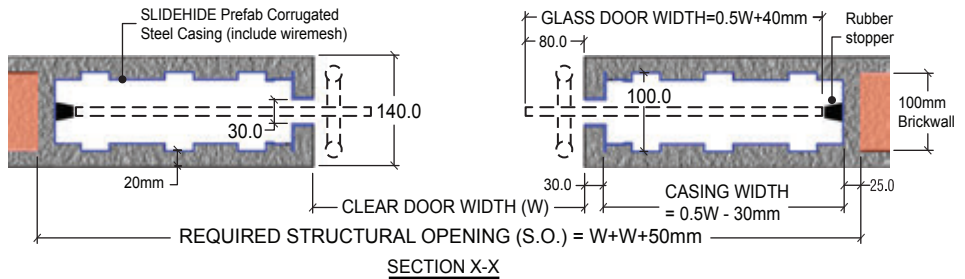
1 FRAMELESS GLASS DOOR IN 1 POCKET					
CLEAR DOOR WIDTH, W (mm)	CLEAR DOOR HT, H (mm)	STRUCT OPENING S.O. (mm)	LINTEL HT, L (mm)	DOOR PANEL DIMENSION	
				WIDTH (mm)	HEIGHT (mm)
700	H = 1900 to 2400mm in increment of 50mm	1445	L = Clear Door Ht (H) + 150mm measured from FINISHED FLOOR.	Door panel width = W+40	Door panel ht = Track Soffit Ht (T) - 40 - 10 (Floor gap)
800		1645			
900		1845			
1000		2045			
1100		2245			
1200		2445			

NOTE : SIZES AVAILABLE ARE FIXED AND CANNOT BE MODIFIED



2 FRAMELESS GLASS DOORS IN 2 POCKETS					
CLEAR DOOR WIDTH, W (mm)	CLEAR DOOR HT, H (mm)	STRUCT OPENING S.O. (mm)	LINTEL HT, L (mm)	DOOR PANEL DIMENSION	
				WIDTH (mm)	HEIGHT (mm)
1200	H = 1900 to 2400mm in increment of 50mm	2450	L = Clear Door Ht (H) + 150mm measured from FINISHED FLOOR.	Door panel width = 0.5W+40	Door panel ht = Track Soffit Ht (T) - 40 - 10 (Floor gap)
1400		2850			
1600		3250			
1800		3650			
2000		4050			
2200		4450			
2400		4850			

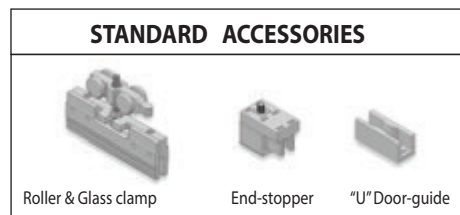
NOTE : SIZES AVAILABLE ARE FIXED AND CANNOT BE MODIFIED



MATERIAL DESCRIPTION AND SPECIFICATION

Supply & install proprietary "SLIDEHIDE" cavity wall system for clear door opening W x H comprising a factory prefabricated CORRUGATED steel casing c/w wiremesh STAPLED on its surface, INTERNAL self-supported min 35mm deep Aluminium Track/s, 120kg capacity Rollers, Glass door aluminium clamp. Rollers must passed the 100,000 cycles Endurance Test by a government accredited testing center.

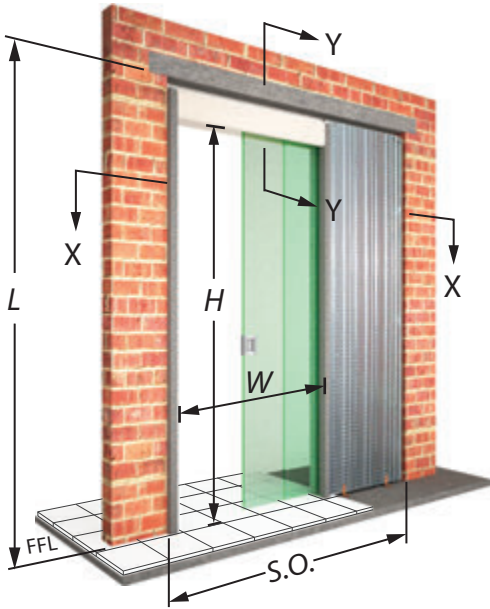
Product is available from SLIDE & HIDE System (S) Pte Ltd.
Tel: +65-6369 9988 Website: www.slidehide.com.sg



LEGEND:-

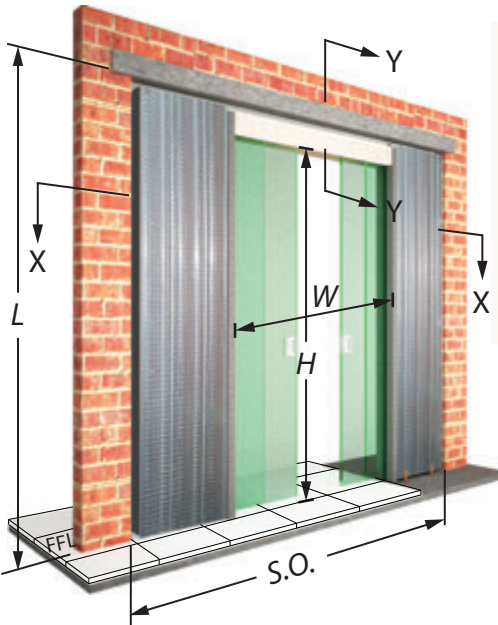
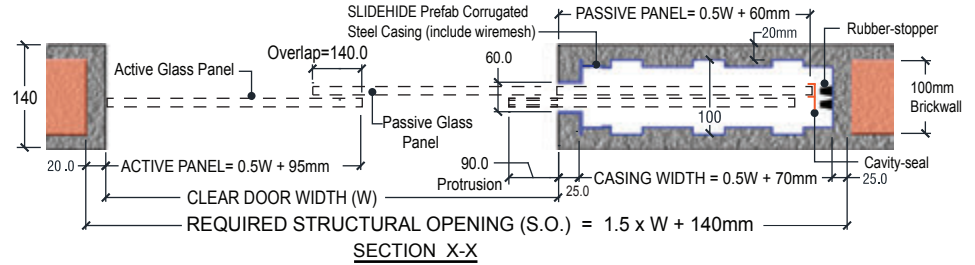
- S.O. - Structural opening width.
- W - Clear door width.
- T - Height from Finish Floor Level (FFL) to Track soffit.
- L - Height from Finish Floor Level (FFL) to Lintel soffit.
- H - Height from Finish Floor Level (FFL) to Pelmet soffit.

SLIDEHIDE SPECIFICATION



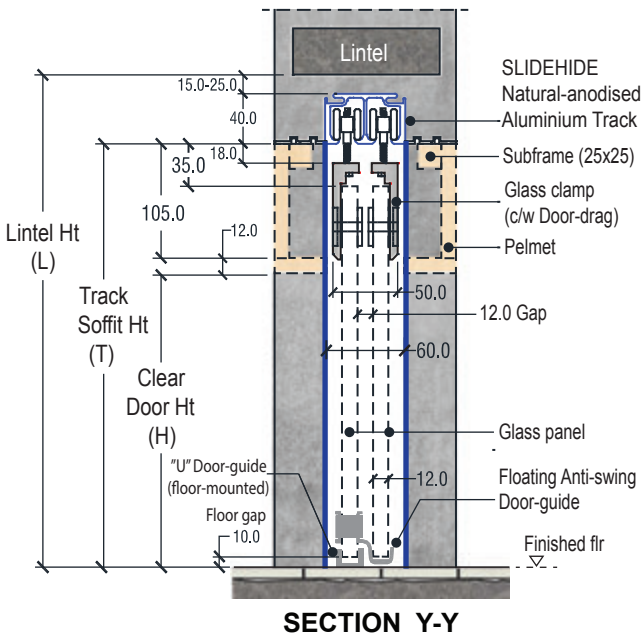
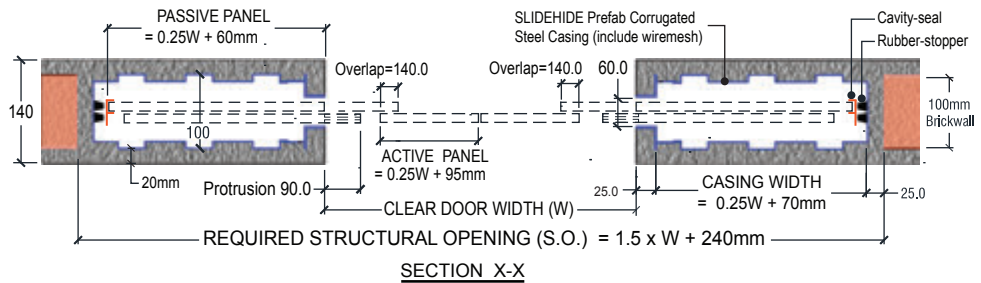
2 FRAMELESS GLASS DOORS IN 1 POCKET					
CLEAR DOOR WIDTH, W (mm)	CLEAR DOOR HT, H (mm)	STRUCT OPENING S.O. (mm)	LINTEL HT, L (mm)	GLASS DR PANEL DIMENSION	
				WIDTH (mm)	HEIGHT (mm)
1100	H = 1900 to 2400mm in increment of 50mm	1790	L = Clear Door Ht (H) + 180mm measured from FINISHED FLOOR.	Active panel = 0.5W + 95 Passive panel = 0.5W + 60	Active & Passive panel ht = Track Soffit Ht (T) - 35 - 10 (Floor gap)
1300		2090			
1500		2390			
1700		2690			
1900		2990			
2100		3290			
2300		3590			

NOTE : SIZES AVAILABLE ARE FIXED AND CANNOT BE MODIFIED



4 FRAMELESS GLASS DOORS IN 2 POCKETS					
CLEAR DOOR WIDTH, W (mm)	CLEAR DOOR HT, H (mm)	STRUCT OPENING S.O. (mm)	LINTEL HT, L (mm)	GLASS DR PANEL DIMENSION	
				WIDTH (mm)	HEIGHT (mm)
2200	H = 1900 to 2400mm in increment of 50mm	3540	L = Clear Door Ht (H) + 180mm measured from FINISHED FLOOR.	Active panel = 0.25W + 95 Passive panel = 0.25W + 60	Active & Passive panel ht = Track Soffit Ht (T) - 35 - 10 (Floor gap)
2600		4140			
3000		4740			
3400		5340			
3800		5940			
4200		6540			
4600		7140			

NOTE : SIZES AVAILABLE ARE FIXED AND CANNOT BE MODIFIED

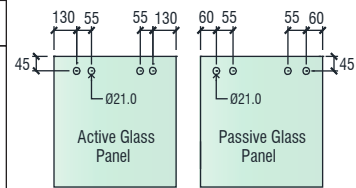


MATERIAL DESCRIPTION AND SPECIFICATION

Supply & install proprietary "SLIDEHIDE" cavity wall system for clear door opening W x H comprising a factory prefabricated CORRUGATED steel casing c/w wiremesh STAPLED on its surface, INTERNAL self-supported min 40mm deep Aluminium Track/s, 120kg capacity Rollers, Glass door aluminium clamp. Rollers must passed the 100,000 cycles Endurance Test by a government accredited testing center.

Product is available from SLIDE & HIDE System (S) Pte Ltd.
Tel: +65-6369 9988 Website: www.slidehide.com.sg

STANDARD ACCESSORIES			
Roller & Glass clamp	Anti-swing Door-guide	End-stopper & Anti-jumper	"U" Door-guide



GLASS DOOR AND GLASS CLAMP HOLE DIMENSION

LEGEND:-

- S.O. - Structural opening width.
- W - Clear door width.
- T - Height from Finish Floor Level (FFL) to Track soffit.
- L - Height from Finish Floor Level (FFL) to Lintel soffit.
- H - Height from Finish Floor Level (FFL) to Pelmet soffit.

SLIDEHIDE Round Lockset (SHLK-R)

Specification:

Supply SLIDEHIDE lockset model SHLK-R for door panel thk 36 to 50mm. Lockset features include 1) hook striking action activated by safety push button 2) colour indicator to show lockset locking and unlocking status 3) thin (less than 1.8mm protrusion) cover plate against door panel surface 4) coin-open emergency unlocking function 5) no exposed lockset screw heads 6) striking plate hole size is adjustable.

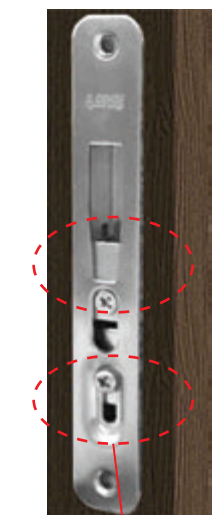
Available finishes



Chrome(Cr)

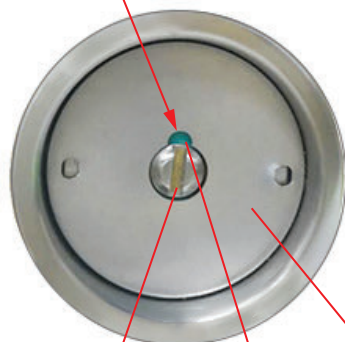


Satin Silver(SS)



Strike plate

Green (unlocked)
Red (locked)



Finger pull handle

Safety push button

Hook
(activated by safety push button)

1

Striking plate hole size can be adjusted anytime to secure the hook.

2

Coin-open for emergency unlocking.

3

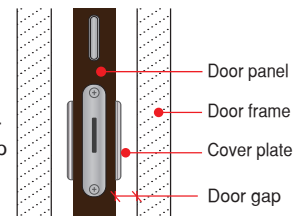
Locked & unlocked indicator.

4

No ugly screw heads.

5

Very thin cover plate to prevent hitting door frame incase door gap is small (eg. pocket door applications)



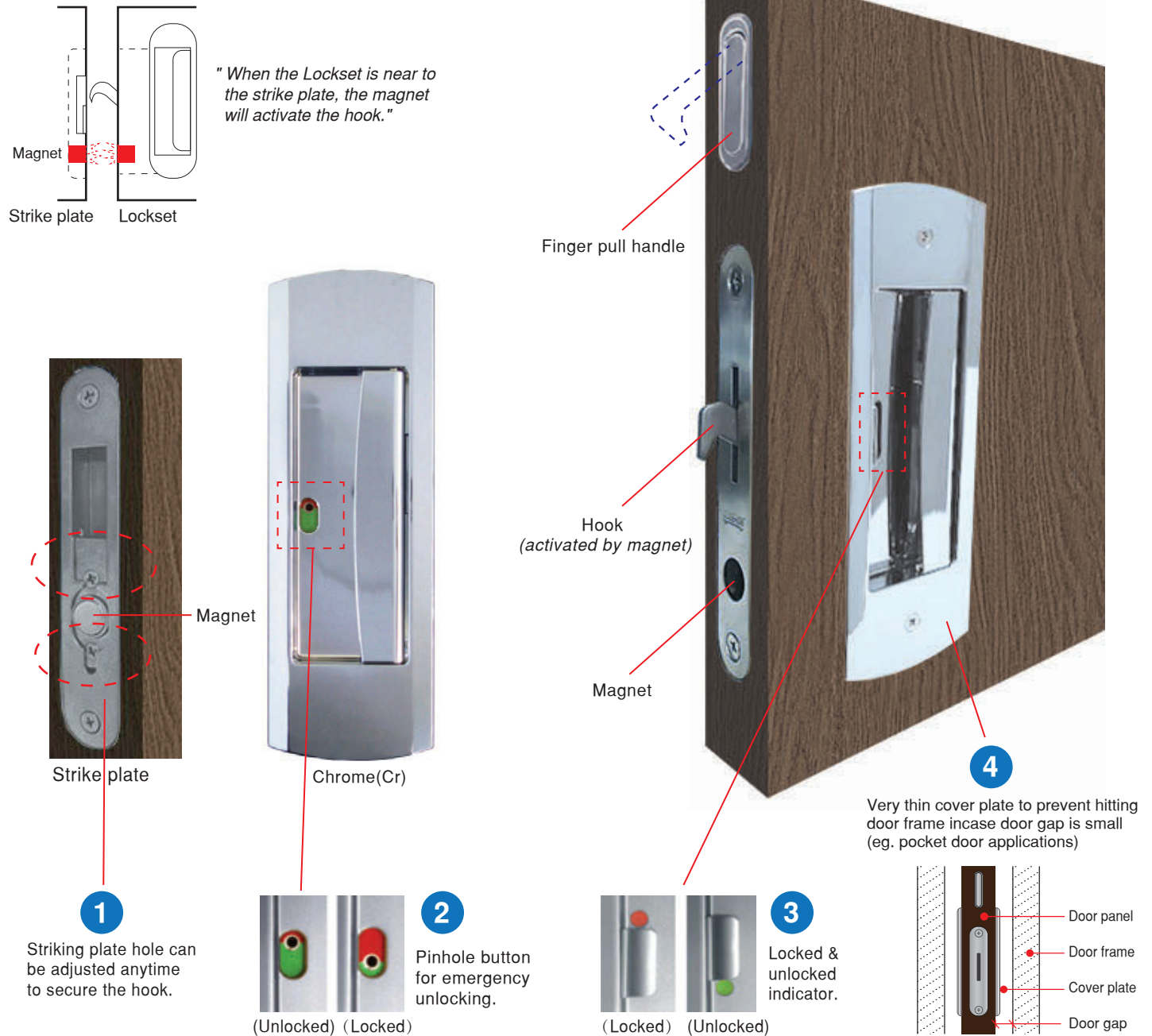
POCKET DOOR LOCKSET DATA SHEET			
Lockset Name	Model	Door thk (mm)	Finish
SLIDEHIDE Round Lockset	SHLK-R	36 to 50	Chrome(Cr)
			Satin Silver(SS)

SLIDEHIDE Magnetic Lockset (SHLK-M)

Specification:

Supply SLIDEHIDE lockset model SHLK-M for door panel thk 36 to 40mm. Lockset features include 1) hook striking action activated only by magnet 2) colour indicator to show lockset locking and unlocking status 3) thin (less than 1.5mm protrusion) cover plate against door panel surface 4) pinhole emergency unlocking function 5) striking plate hole size is adjustable.

How does Lockset hook works?



POCKET DOOR LOCKSET DATA SHEET

Lockset Name	Model	Door thk (mm)	Finish
SLIDEHIDE Magnetic Lockset	SHLK-M	36 to 40	Chrome(Cr)

SLIDE & HIDE System (S) Pte Ltd



About door panel...

- 1) What is the maximum door panel weight that the Rollers can withstand ?
- *SLIDEHIDE rollers can hang up to 120kg door.*
- 2) What is the maximum door width limitation ?
- *The limitation for the door panel width is 1200mm.*
- 3) What is the maximum door thickness allowed ?
- *40mm is the max allowed, including door beading. Please check with us if door panel is going to be thicker than 40mm.*
- 4) Is there a limitation with regards to door panel design and material ?
- *There is no restriction. Anyone can select any design and material.*
- 5) Does the door panel wobble while it is sliding ?
- *There is a partially hidden door guide to control the sliding motion of the door panel. Hence, the wobbliness is not noticeable.*
- 6) Will the door panel get stuck inside the casing ?
- *We have designed enough safe gap clearance and implement proper quality control in our manufacturing process to prevent this from happening.*
- 7) Do I have to hack the wall to change the door panel ?
- *No, just remove one of the top door frame will do. Refer to our catalogue for the procedure.*
- 8) We have experienced door panel sliding on its own caused by slanting track, due to bad workmanship or product quality. Will this defect also happen in SLIDEHIDE ?
- *Yes, the door panel will slide by itself if the track is slanting. This will not happen in SLIDEHIDE because our track is supported and controlled by the casing and due to our standardized production process, our casing accuracy is assured.*
- 9) Will there be a visible floor track on the floor ?
- *No, the floor finishes will not be disturbed.*
- 10) Can i adjust the floor gap between the door panel and the floor ?
- *Yes, the gap can be adjusted between 5 to 10mm.*
- 11) Do you supply and install the timber door frame and door panel ?
- *No we don't for the following reasons :-*
 - a) *We are not a door contractor.*
 - b) *The door panel and door frame design, workmanship and material used must be the same as the swing doors in other rooms.*
 - c) *There will be economy of scale and cost if all the timber doors and frames comes from the project door contractor.*
- 12) If the door panel and frame is supplied and installed by a 3rd party (door contractor), will there be accuracy problems ?
- *There will not be any problem. As SLIDEHIDE casing is produced by machines using systematic manufacturing processes, the casing dimensions are accurate. As such, when the door panel and frame is fixed onto the casing, it will also be accurate.*



About SLIDEHIDE casing...

- 13) Can I hang objects onto SLIDEHIDE finished wall surface ?
- Yes, if the weight is below 15kg. For weight exceeding 15kg, please check with us.
- 14) What is the max wall-tile thickness that can be laid on SLIDEHIDE casing ?
- Wall-tile less than 20mm thick can be laid. Please check with us if the thickness is more than 20mm.
- 15) What kind of waterproofing material can be applied on SLIDEHIDE casing ?
- There is no restriction on the type of waterproofing material.
- 16) Will crawling insects and rodents reside inside the casing ?
- Since the history of SLIDEHIDE, we have not heard of such incident happening.
- 17) How long it takes to install a SLIDEHIDE casing ?
- One skilled worker requires 30 to 45mins to install a SLIDEHIDE casing.
- 18) Will there be water ponding inside the cavity base ?
- If the casing base is on the same level as the floor finishes, ponding will not happen.
- 19) At which construction stage will SLIDEHIDE need to be installed ?
- Immediately after erection of brickwall and lintel.



About SLIDEHIDE rollers...

- 20) What is the lifespan of SLIDEHIDE rollers ?
- Under normal usage and within our design specification, more than 10 years is definitely no issue.
- 21) Is SLIDEHIDE rollers noisy while the door panel slides ?
- So far our customers are happy with the smoothness and quietness of SLIDEHIDE rollers.



About SLIDEHIDE In General

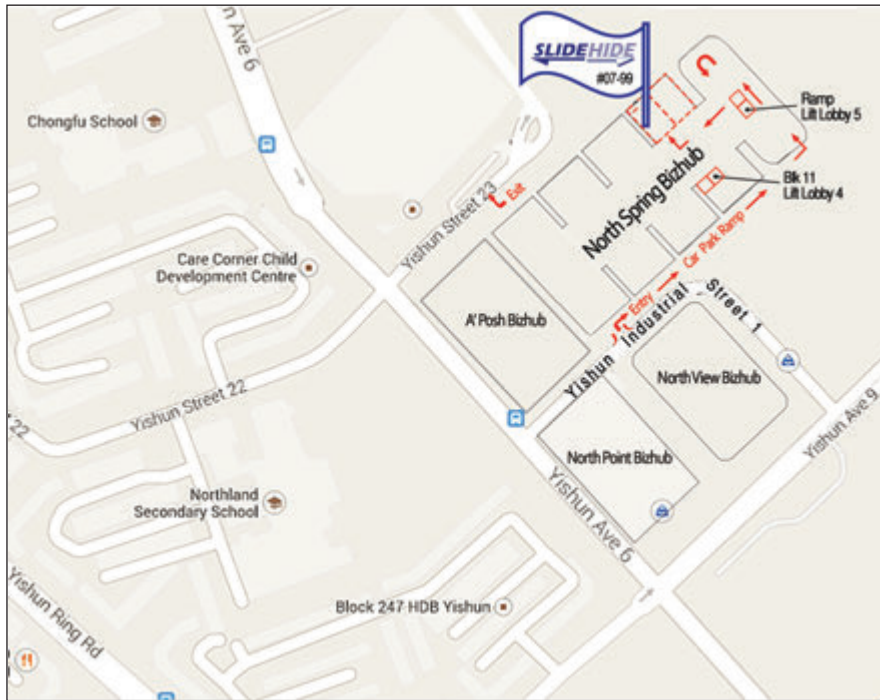
- 22) Is customized clear door opening width possible, eg. 820mm ?
- It can be done if the quantity exceed 100 sets for one size.
- 23) What is the acoustic performance of SLIDEHIDE ?
- So far the sound damping property is acceptable to our customers.
- 24) Will the cavity wall vibrate when the door panel is sliding ?
- No such problem for SLIDEHIDE.
- 25) What is the warranty period ?
- Our standard warranty period is ONE year.

We apologise if you cannot find the answer to your questions... please email (enquiry@slidehide.com.sg) your questions to us and we will get back to you soonest possible.



"Optimising Space Usage"

LOCATION MAP
SINGAPORE (HEAD OFFICE)



SLIDE & HIDE System (S) Pte Ltd (Since 1995)

🏠 Add : 11, Yishun Industrial Street 1, #07-99,
North Spring Bizhub. Singapore 768089
☎ Tel : +65 6369 9988 📠 Fax : +65 6369 9977
✉ Enquiry : enquiry@slidehide.com.sg
✉ Feedback : cust-scv@slidehide.com.sg
🌐 Web : www.slidehide.com.sg



Regional Offices :-

(China)
SLIDE & HIDE System (Suzhou) Co., Ltd (Since 2001)

Branches	Telephone	Fax
Suzhou -	+86 512 6593 0005	+86 512 6593 0006
Shanghai -	+86 21 6233 9866	+86 21 6233 7276
Shenzhen -	+86 755 8363 3199	+86 755 8363 0068

(Malaysia)
SLIDE & HIDE Space Saving System (M) Sdn Bhd (Since 2012)

Tel: +603 7887 8891 Fax: +603 7887 8896

(Philippines)
Wisdom and Wealth Trade, Inc. (Associate Co.)

Tel: +632 668 6698 / +632 507 2680
Fax: +632 277 7832

- Copyright 2015 : SLIDE & HIDE System (S) Pte Ltd. All rights reserved.
- "SLIDEHIDE" is a registered trade mark of SLIDE & HIDE System (S) Pte Ltd.
- The system in this catalogue is protected.
- No part of this catalogue may be reproduced or transmitted in any form or by any means, or stored in any retrieval system of any nature, without prior written permission from SLIDE & HIDE System (S) Pte Ltd.
- The technical presentation and data including illustrations and drawings are not binding. SLIDE & HIDE System (S) Pte Ltd reserves the right to make modifications/ additions/ alterations/ improvements when necessary without prior notification.

DISTRIBUTED BY :-

